

1

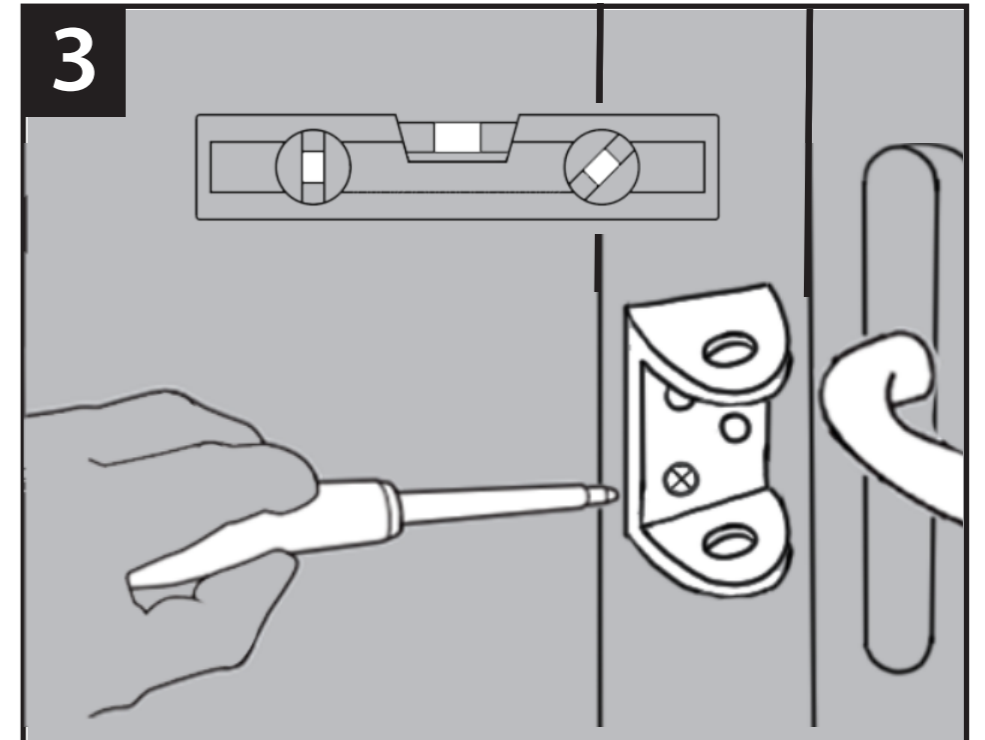
PREPARE PARTS BY UNSCREWING THE THUMB SCREW
3@6 E7B7D3F7 G@FEI >A@9 E5D7I E 8ADGE7;@F;? 47D
AD4D;5=fE: ADF7DE5D7I E 8AD6AAD8D3? 7E

2

LARGER HOLE AT
THE TOP

LINE THE BRACKET UP I ;F: THE WALL/DOOR, ENSURING
IT IS LEVEL TO THE HANDL7I A@F: 7 4D35=7F >3D97D
: A>7FA F: 7FAB

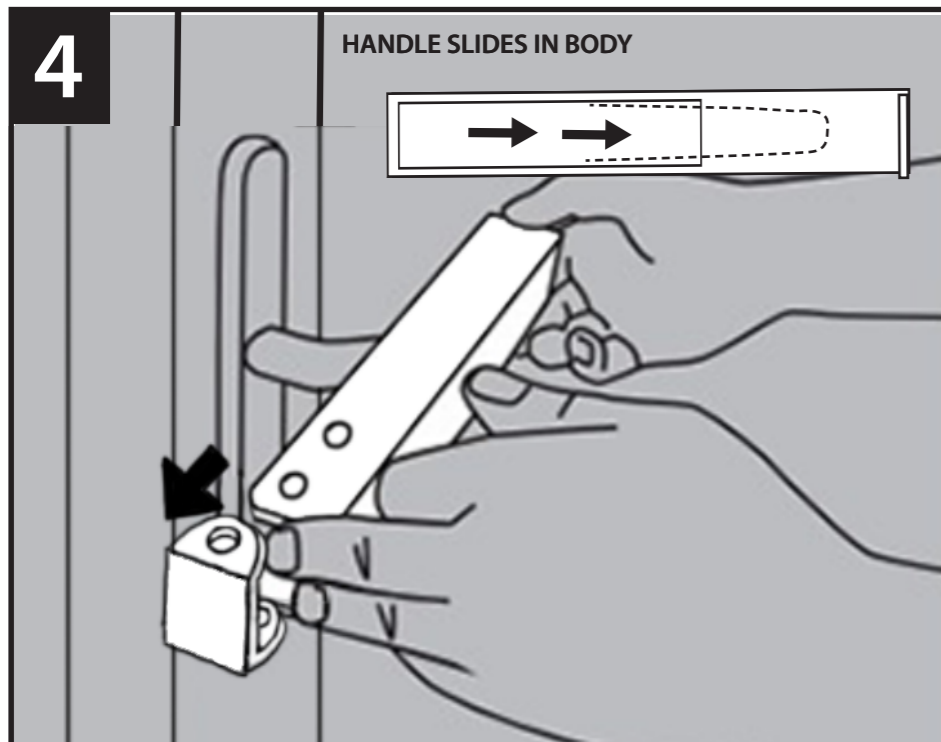
3



ONCE ALIGNED, SCREW BRACKET INTO PLACE,
STILL ENSURING IT IS LEVEL

4

HANDLE SLIDES IN BODY



TO SECURE, PLACE PX-4 OVER THE HANDLE SLIDING
THE ADJACENT HOLES INTO PLACE

5

PLACE THUMB SCREW INTO THE HOLE AND SCREW TO
SECURE

6

THE DEVICE IS NOW SECURE AND THE DOORS
RETAINED