

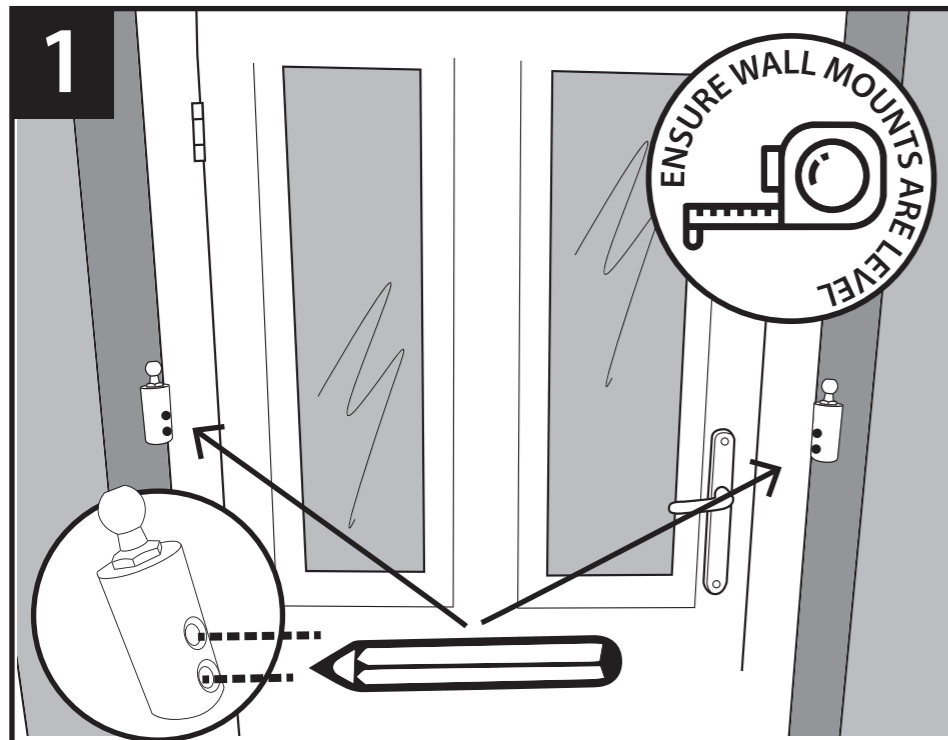
INSTALLATION & OPERATIONAL INSTRUCTIONS

PRODUCT CODE: PX-2 DAY & NIGHT DOOR / PATIO DOOR RETAINER

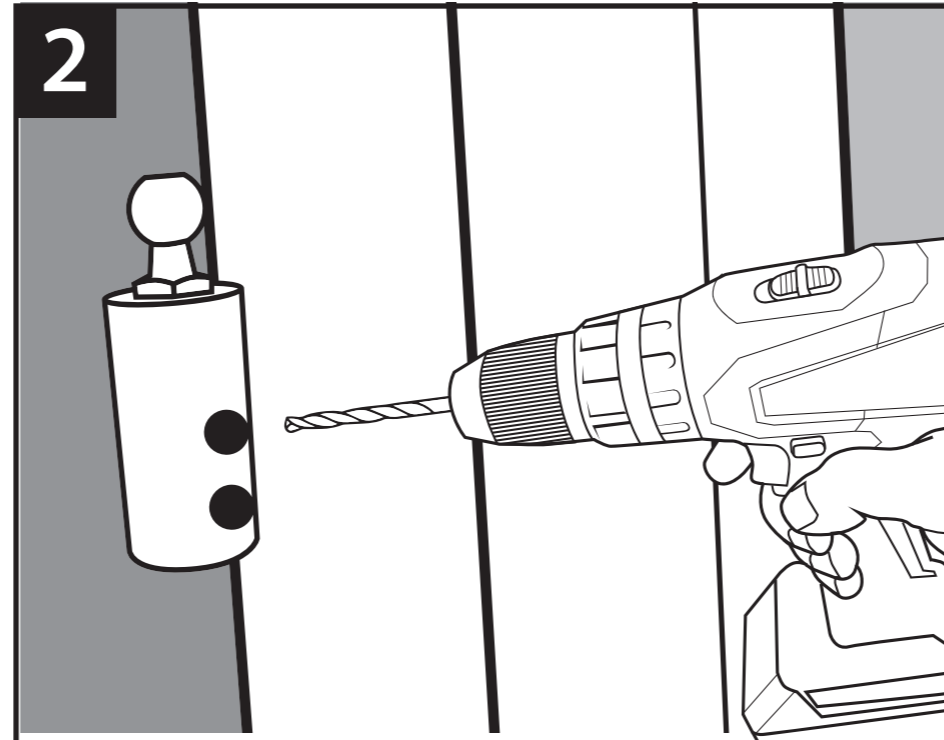
TOOLS REQUIRED: DRILL. LARGE CROSS HEAD SCREW DRIVER. SAFETY GOGGLES
10MM MASONRY BIT (RAWLPLUGS INCLUDED)



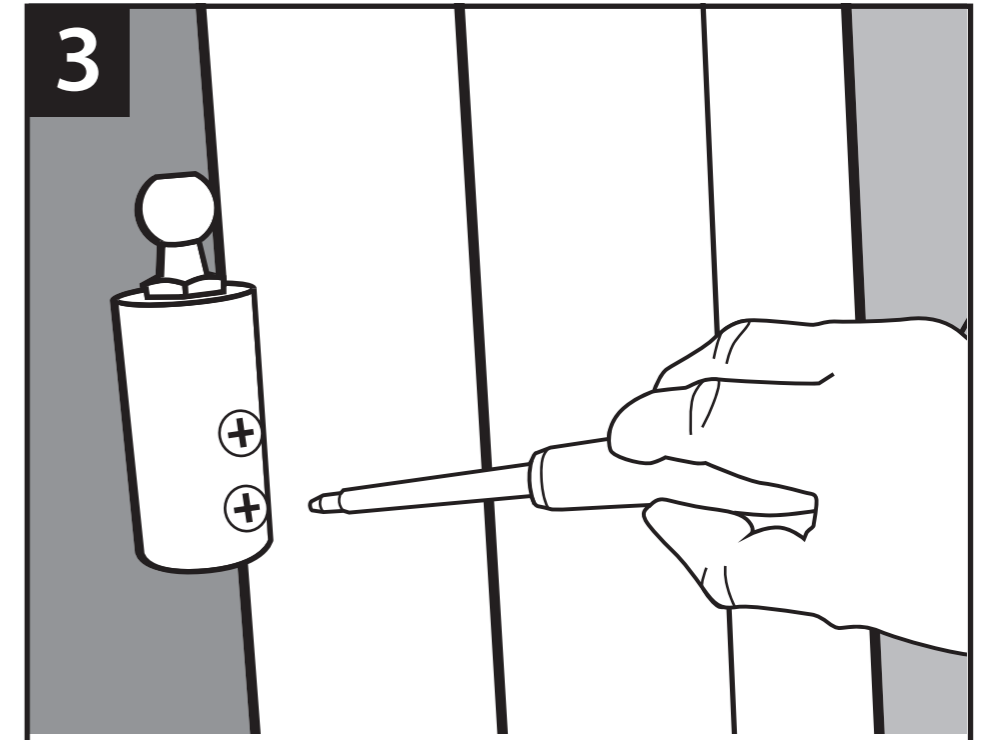
WWW.SECURIAN.STORE



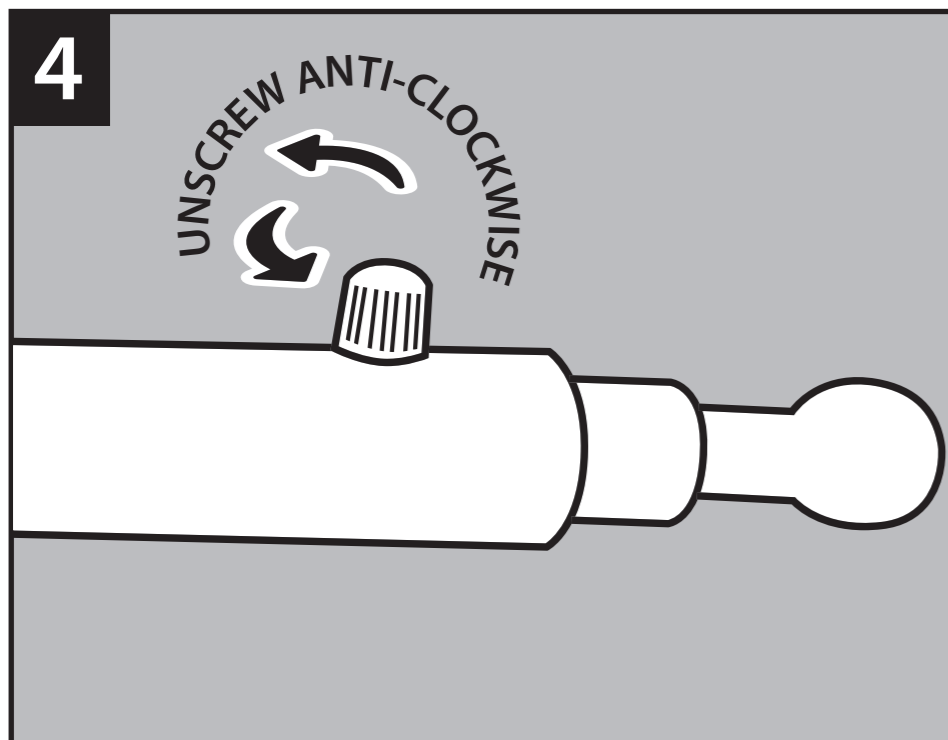
1 PLACE A WALL MOUNTS WHERE REQUIRED & ENSURE LEVEL THEN MARK HOLES IN POSITIONS.



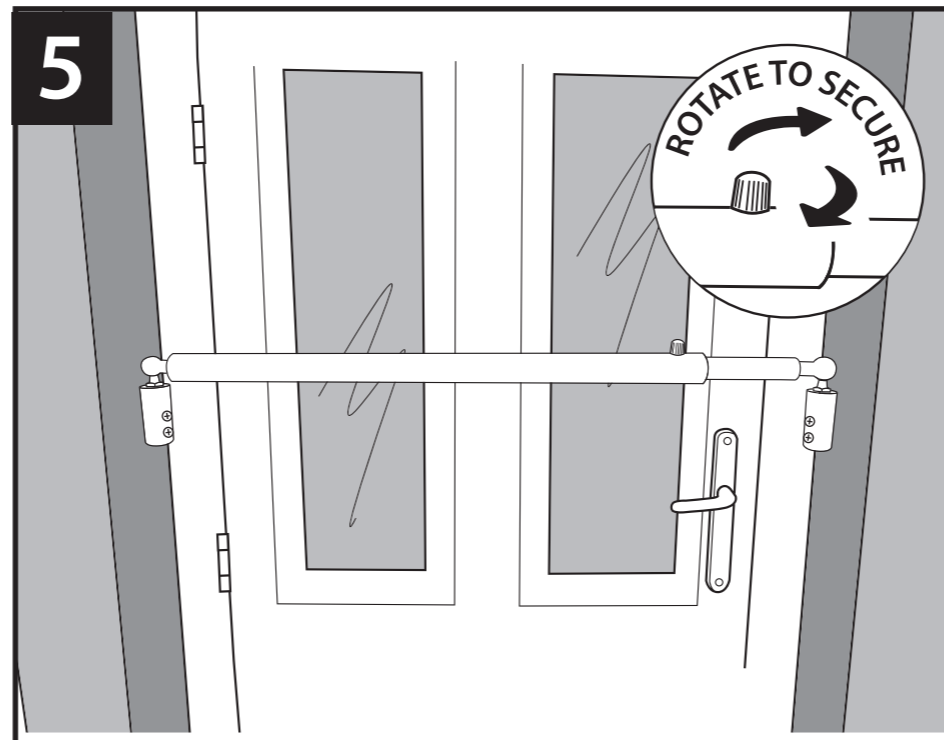
2 DRILL HOLES IN WALL FOR BOTH MOUNTS AND INSERT SUPPLIED FIXINGS



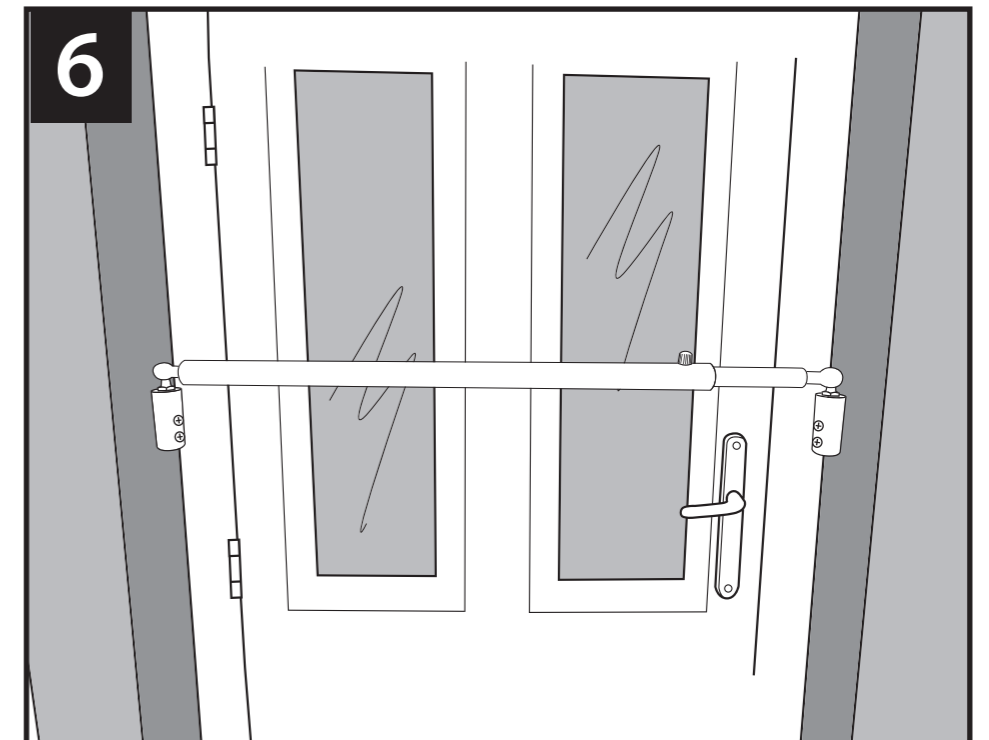
3 SECURE MOUNTS TO WALL WITH SCREWS USING CROSS HEAD SCREWDRIVER



4 RELEASE POLE BY THUMB SCREW AND EXTEND POLE TO REQUIRED SIZE.



5 PLACE POLE ON TO MOUNTS AND TIGHTEN THUMB SCREW



6 THE DEVICE IS NOW SECURE AND DOORS IS RETAINED